

S.W. 1/4 OF SECTION 29, T.7N., R.1W., S.L.B. & M.

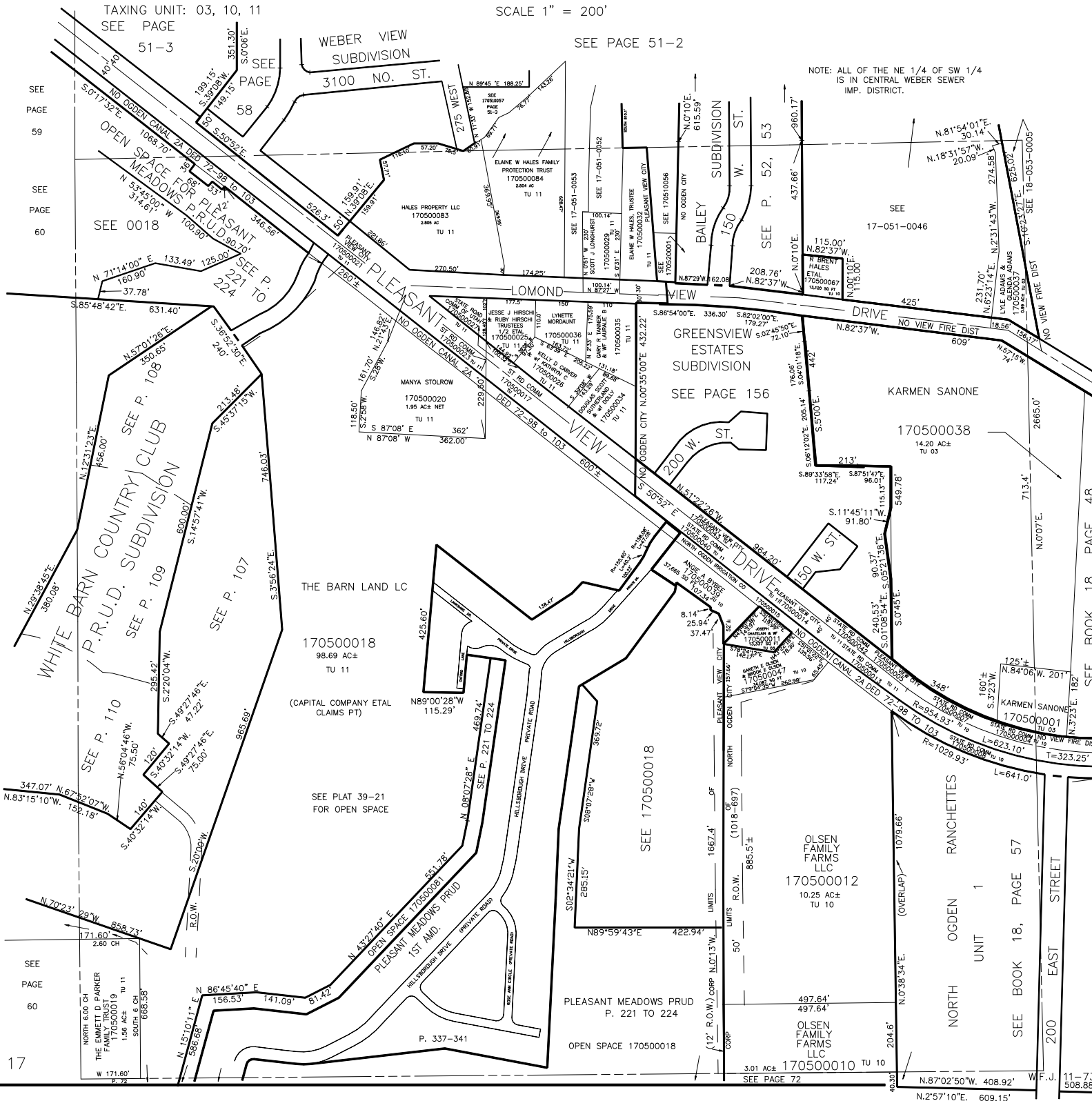
IN NORTH OGDEN CITY, TOWN OF PLEASANT VIEW, WEBER COUNTY

SCALE 1" = 200'

TAXING UNIT: 03, 10, 11
SEE PAGE 51-3

SEE PAGE 51-2

NOTE: ALL OF THE NE 1/4 OF SW 1/4 IS IN CENTRAL WEBER SEWER IMP. DISTRICT.



SEE PAGE 60

17

SEE BOOK 18, PAGE 48

SEE BOOK 18, PAGE 57

11-73 508.88'

N.87°02'50"W. 408.92'

N.2°57'10"E. 609.15'

SEE PAGE 72